

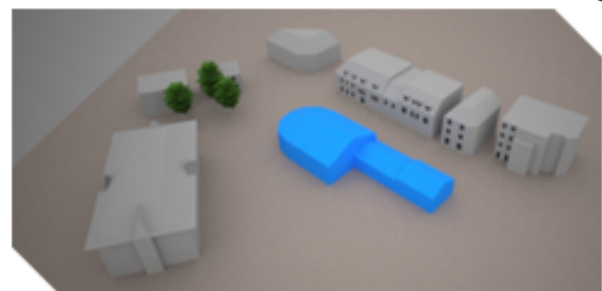
HOW BIG CAN YOU BUILD?

Syntegra Consulting provides a unique and bespoke service related to Daylight/Sunlight/Overshadowing reports called **Maximum Envelope Analysis.**

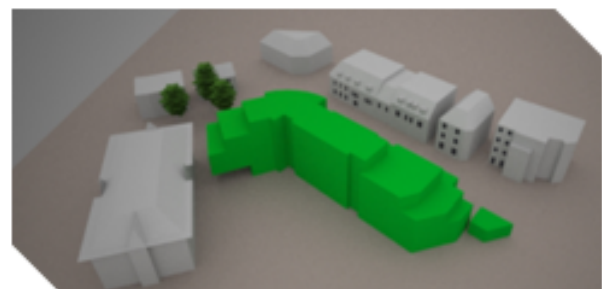
This helps us when advising on the massing available to maximise your GEA* to which a building can be built without obstructing daylight and sunlight to surrounding properties.

*Gross External Area

- ✓ Maximise your development value
- ✓ Save time and money
- ✓ Reduce planning risk in abortive application/design
- ✓ Calculations in accordance with the BRE guidelines



Existing



Proposed

- Provides architects/developers with a maximum massing to design
- Preliminary tests are undertaken in a RAG colour graded system (red, amber, green) to quickly assess potential impact by a development